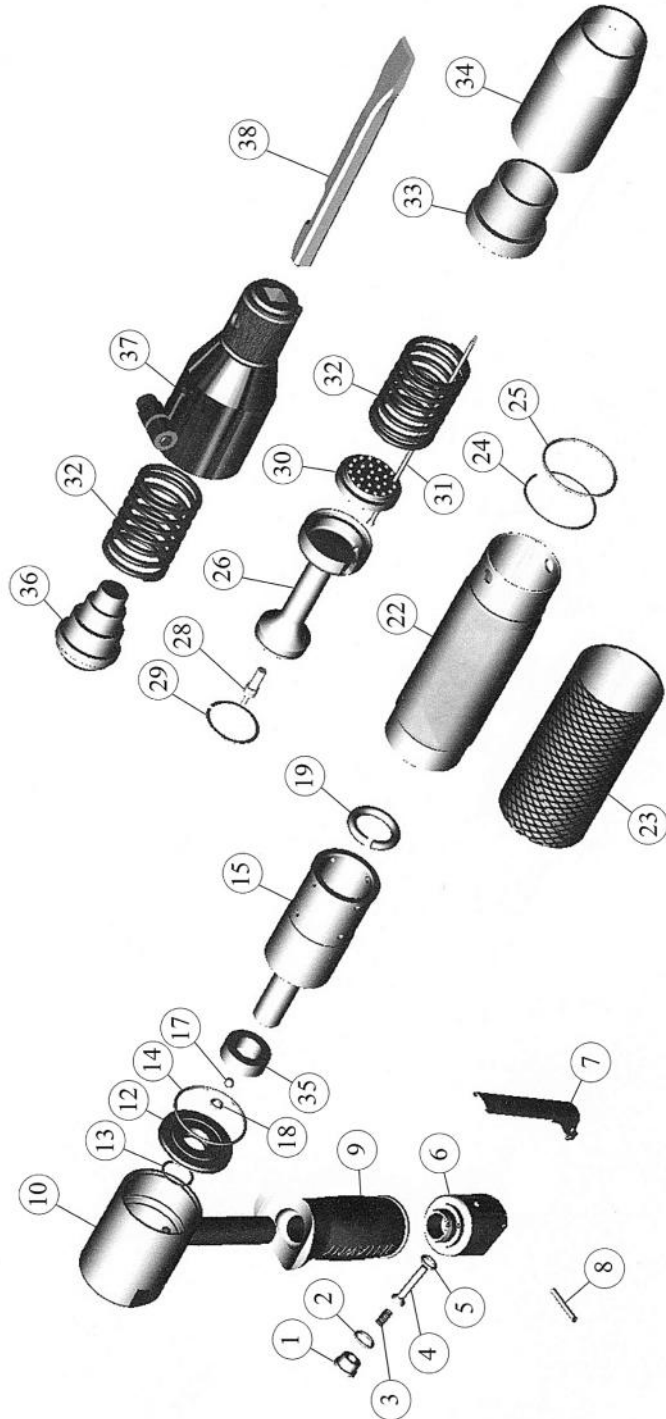


EXPLODED VIEW

PARTS LIST



EXPLODED VIEW

ITEM No.	PART No.	DESCRIPTION	ITEM No.	PART No.	DESCRIPTION
VL303 Components			VL303 Components		
1	615.3021	Valve Cap	32	712.3003	Front Spring
2	809.0139	Valve Cap O'Ring	33	620.3003	Front Tube Insert
3	712.3022	Valve Spring	34	622.3030	Front Tube
4	618.3022	Valve Stem	35	729.3003	Cylinder Stem Reaction Ring
5	809.0089	Valve Seat O'Ring	36	610.3003	Anvil
6	616.3021	Valve Body	37	419.3003	Chisel Holder
	423.3021	Valve Body Assembly BSP Thread (inc items 1-8)			
	323.3521	Valve Body Assembly NPT Thread (inc items 1-8)			
7	716.3000	Throttle Lever			
	716.1000	Safety Throttle Lever			
8	813.0108	Roll Pin	38	704.3101	Chisel 1/2" Sq Shank 7" x 3/4" Blade
9	717.3050	Rubber Handle Grip		704.3103	Chisel 1/2" Sq Shank 7" x 2 1/2" Blade
10	425.3003	Cover Assembly (Pistol Grip)		704.3205	Chisel 1/2" Sq Shank 7" x 1 3/8" Blade
12	652.3003	Guide Plate		704.3110	Chisel 1/2" Sq Shank Spark Resistant 2" Blade
13	829.3003	Guide Plate Seal		705.1102	Chisel 5/8" Hex Shank 8" x 4" Blade
14	809.0299	Guide Plate O'Ring		705.1106	Chisel 5/8" Hex Shank 9" x 2" Blade
15	428.3003	Cylinder		705.1112	Chisel 5/8" Hex Shank Spark Resistant 4" Blade
				708.1100	Comb Holder 5/8" Hex Shank (for 1 1/2" Comb)
17	816.3003	Plastic Ball 6mm diameter		431.3504	Scraper 5/8" Hex Shank c/w 4" Blade
18	809.0080	Ball Retaining O'Ring			
				819.2375	Connector 1/4" BSPT-3/8" Stem
19	809.3004	Piston Cushion			
22	622.3031	Intermediate Tube			
23	721.3003	Intermediate Tube Outer Sleeve			
24	814.3003	Circlip			
25	809.0299	Front Tube Locking O'Ring		418.3003	Vacuum shroud assembly (with flat cuff)
26	612.3003	Piston		731.3103	Flat Cuff
				446.3003	Service Kit, (2,5,13,14,17,18,19,28,29,30,31set & 32)
28	636.3003	Valve Pin			
29	829.3002	Piston Ring			
30	601.3030	3mm Needle Holder (fitted as standard)			
	601.3020	2mm Needle Holder			
	601.3040	4mm Needle Holder			
31	413.2128	6 x Needle 3mm Chisel set (fitted as standard)			
	412.1165	6 x Needle 2mm Flat set			
	413.1128	6 x Needle 3mm Flat set			
	413.3128	6 x Needle 3mm Pointed set			
	403.1328	Needle set (1 x set Beryllium Copper)			
	414.1119	6 x Needle 4mm Flat Tipped			

TRELAWNED
TOOLS AND MACHINERY